

The Australian plant collections of Diels and Pritzel 1900–1902

Neil Gibson

Biodiversity and Conservation Science,
Department of Biodiversity, Conservation and Attractions,
Locked Bag 104, Bentley Delivery Centre, Western Australia 6983
School of Biological Science, Faculty of Science, The University of Western Australia,
35 Stirling Highway, Crawley, Western Australia 6009
Email: Neil.Gibson@dbca.wa.gov.au

Abstract

Gibson, N. The Australian plant collections of Diels and Pritzel 1900–1902. *Nuytsia* 29: 25–56 (2018). Ludwig Diels and Ernst Pritzel undertook a two year collecting trip between 1900–1902 that included Western Australia, the eastern seaboard and New Zealand. Material collected on this expedition resulted in publication of over 300 new taxa. The loss of many of Diels' types during a bombing raid on Berlin in 1943 has resulted in a need to designate neotypes for many of these names. The history and possible nomenclatural significance of the joint collections they donated to the Western Australian Museum in 1901 is examined to assist identification of candidate material.

Introduction

Between 1900 and 1902 two young Germans, Ludwig Diels and Ernst Pritzel, undertook a scientific expedition that visited South Africa (2 months), Western Australia (14 months), and the eastern seaboard of Australia and New Zealand (6 months). During that time they amassed thousands of collections in four series of numbers. These collections have particular nomenclatural interest as they formed the basis of over 300 novel taxonomic descriptions published as *Fragmenta Phytographiae Australiae occidentalis* in Engler's *Botanische Jahrbücher* (Diels & Pritzel 1904–1905). Of these, some 126 are currently in use.

Diels largely collected unicates and these were deposited in the herbarium of the Royal Botanical Museum in Berlin (now the Berlin-Dahlem Botanical Garden and Botanical Museum (B)). His travels were financed with a grant from the Humboldt Foundation to prepare an account of the vegetation formations of Western Australia and conduct an investigation of the conditions influencing the development of the wide range of species existing in the flora (Diels 1906, 2007). From his publications and surviving specimens he appears to have made 4,660 collections in Western Australia and a significant number of additional collections in South Africa, New Zealand and eastern Australia (Table 1).

Pritzel, on the other hand, personally financed his part of the expedition by collecting multiple sheets for his *Plantae exsiccatae Australiae occidentalis*. This comprised 1,016 taxa numbered sequentially and listed at the end of the *Fragmenta*. On his return to Germany he sold many of the duplicates and these have made their way into herbaria across the world. While the number

Table 1. Diels' collection numbers for years 1900–1902.

Location	Collection numbers	Period
South Africa	1–1499	August – October 1900
South-western Australia	1500–6160	30 th October 1900 – 28 th December 1901
Eastern Australia & New Zealand	6161–8706 ¹	4 th January 1902 – 17 th June 1902
New Guinea & South-east Asia	none	June 1902

¹This being the highest number located to date

of duplicates collected was not documented in the *Fragmenta*, over 20 sheets per taxon have been located for some taxa (e.g. *Pritzel* 849, 858; *Global Plants* accessed 21 April 2017).

In addition to these well-known sequences there are at least two additional extant series. The first is joint collections of *Diels & Pritzel* that were presented to the Perth Museum (now Western Australian Museum – WAM) as part of the agreement for permission to collect in Western Australia and for the use of railway passes that facilitated their extensive excursions (State Records Office of Western Australia 1900). These collections were eventually passed from the WAM to the State Herbarium Western Australia (later renamed Western Australian Herbarium (PERTH)) in 1957. The current holdings comprise some 568 sheets, some of which are unnumbered. Two further sheets of this set have been located outside of PERTH, both in the herbarium of the Natural History Museum of Denmark (C).

The final series is of fungi collected by Pritzel in New South Wales and Queensland in the first half of 1902 and described by Hennings (1903). Hennings listed 123 Pritzel collections, with the highest number in the sequence being 163. Hennings (1901a) had previously described 13 new taxa taken from Diels' and Pritzel's individual collections appending an 'a' to their collection numbers, and a further six taxa from unnumbered Pritzel collections (Hennings 1901b).

Most of the herbarium at the Royal Botanical Museum in Berlin was destroyed by a bombing raid on the night of 1st March 1943, resulting in the loss of a large part of their holdings (Hiepko 1987). While some types had been evacuated earlier in the war most of Diels' Australian collections were lost with less than 100 surviving in B (Röpert 2000–). Most of the surviving collections are types (75 of 92 sheets). In addition some 56 of Pritzel's Australian collections can be found in B; 54 of these are types (Röpert 2000–). Databasing of B material is continuing and more material may be uncovered.

Many of the new taxa described in the *Fragmenta* were based on Diels' and Pritzel's collections. For those names where the types were destroyed it has been necessary to designate neotypes (where only Diels' collections were cited) or lectotypes (where Pritzel's collections were cited). Finding adequate material to lectotypify Pritzel's types is generally straightforward given the wide distribution of his collections.

Some authors have considered the joint *Diels & Pritzel* collections found in PERTH to be duplicates of type material cited in the *Fragmenta*. Recent research into the history of this material throws some doubt on this interpretation. The aim of the present study is to describe the three non-fungal collection series and examine the nomenclatural status of their joint collections.

Diels' collections

Diels' Australian collections have a specific label headed 'L. Diels, Reise in Auftrag der Humboldt – Stiftung.' [L. Diels, journey on behalf of the Humboldt Foundation]. Under the header is printed 'No.' for his collection number, followed by a space for the taxon name. An abbreviated family name is often given on the top right under the header. Immediately under the taxon name is space to insert the equivalent Pritzel number; this is only occasionally used. A brief description of the collection is often inserted above the location information. The location information starts with 'West-Australien:' then he typically wrote the land district or his botanical district followed by more specific information. Space for the date is found on the lower left of the label and Diels' name is printed on the lower right of the label. It is noted that Diels invariably gave the full date (Figure 1).

Most of Diels' material was lodged in B, with small amounts now to be found in the British Museum (BM), Kew (K), National Herbarium of New South Wales (NSW), National Herbarium of Victoria (MEL) and PERTH (*Global Plants* accessed 21 April 2017). Material for the first three appears to be the result of normal herbarium exchanges. The material in MEL and PERTH has a more complicated history. Diels and Pritzel spent a week or two at MEL in March 1902 before heading back to Europe (Ewart 1907). Diels obtained some collections from MEL that he took back to B. These included sheets of Drummond, Brown and Mueller types. To these he affixed his own label and annotated them 'ex Herb. Melbourne, comm. L. Diels' and gave them his collection numbers (e.g. 7345, 7346, 7348, 7455, 7463, 8014, 8019, 8024, 8026 extant in B). At that time J.G. Luehmann was Curator of the National Herbarium Melbourne and Government Botanist and no doubt sanctioned the transfer of this material.

The subsequent Government Botanist Alfred Ewart took a dimmer view of Diels' acquisitions and pursued a correspondence with Diels for some years, seeking a set of their Western Australian material. In a letter to Maiden in May 1907 Ewart wrote '*By the way Diels & Pritzel seem to have been allowed to plunder our herbarium to a remarkable extent when they were here some years ago for a few weeks time. I can hardly believe that it was done with Luehmann's sanction, as they have even "stolen" one of his species in the most barefaced manner, & we have nothing to show in exchange. It is difficult to know what to do in such cases*' (Ewart 1907). In 1909 Diels appears to have sent 12 sheets to MEL, 11 of which were types, and five of which have a distinctive blue label not seen on any other of his collections. None of this material bears his 1901 label.

Over 230 sheets of Diels material can be found in PERTH, most having been obtained by C.A. Gardner when he visited the Berlin herbarium in 1937 while serving as Australian Botanical Liaison Officer at Kew. Gardner and Diels had corresponded since 1923 and while in Berlin Gardner took fragments off at least 150 of Diels' Western Australian collections, of which 35 represent types. This material was subsequently mounted and labelled with Diels' number and are considered duplicates of the B sheets (Figure 2). Another set of 63 sheets of Diels material came to PERTH from the Blackall Herbarium and may represent other material obtained by Gardner in Berlin in 1937.

Pritzel's collections

Pritzel's Western Australian collections similarly have a specific label headed 'E. Pritzel: *Plantae Australiae occidentalis*' [E. Pritzel: Flora of Western Australia]. As with Diels' labels the first line under the header is printed 'No.', then there is a space for his number and taxon name. Following this is a printed description of the location and general vegetation (different for different regions).

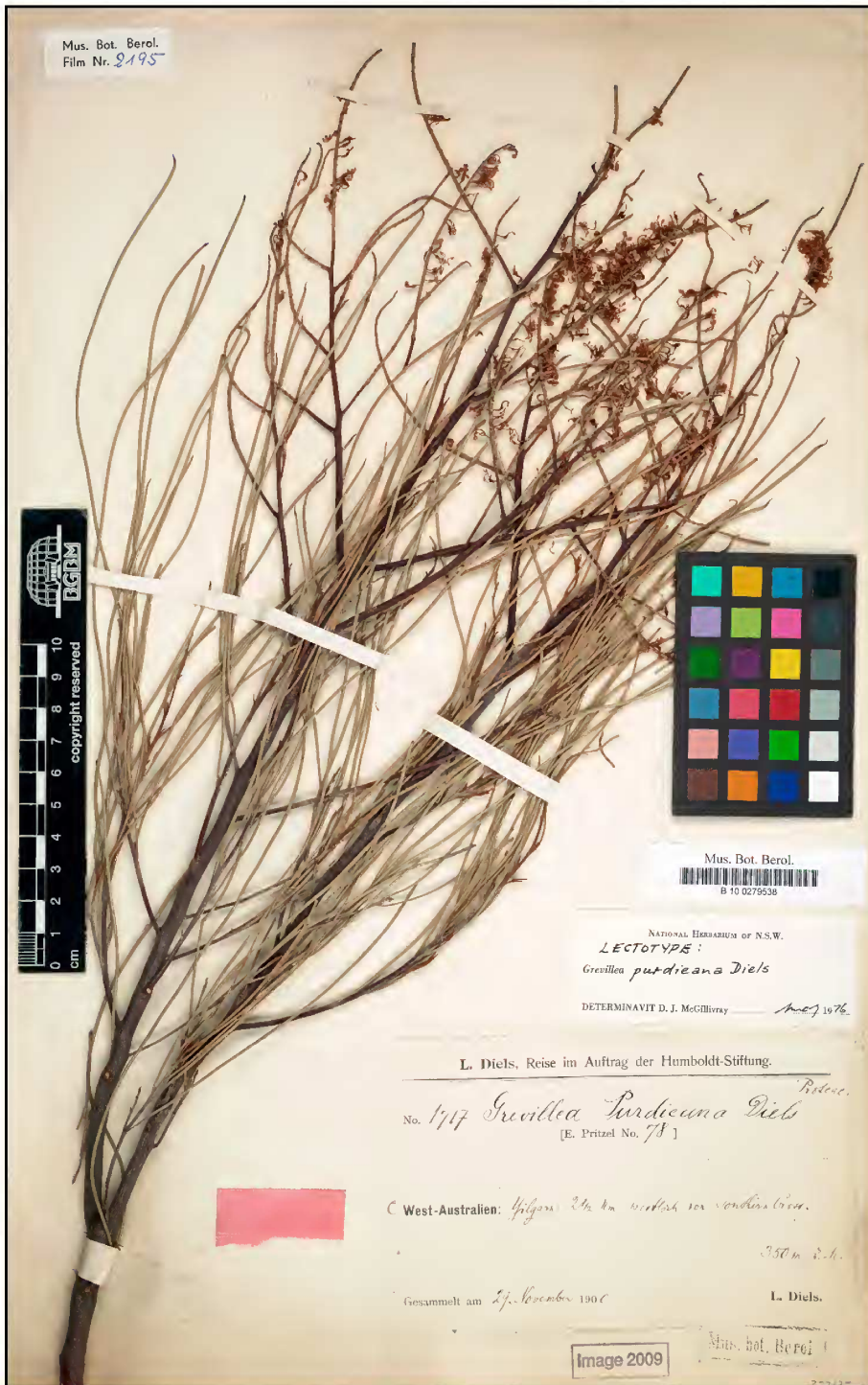


Figure 1. Diels 1717, *Grevillea purdieana* Diels, showing the label Diels used on all his Australian collections. Source: Röpert (2000–), published at <http://www2.bgmn.org/herbarium/> (Barcode: B 10 0279538 / Imaged: 294718) [accessed 27 April 2017].



Figure 2. Fragment of Diels 4940 removed by Gardner from type in B in 1937 and later remounted; the B label (in Gardner's hand) appears to have been moved to accommodate the State Herbarium Western Australia label. Source: PERTH.

The date appears at the lower left, generally only the month and year, and ‘leg. E. Pritzel’ [collected E. Pritzel] is printed on the lower right (Figure 3). The collections of this set found in B generally have an additional hand written slip with collection number, taxon name, location description, month, year, and ‘leg. E. Pritzel’ (Figure 3). These B collections are occasionally lacking the *Plantae Australiae occidentalis* label but rather have a general B label or a label of Pritzel’s herbarium (Table 2). All material seen is however consistently numbered as given at the end of the *Fragmenta*.

There are some 443 sheets of Pritzel material in PERTH. As with the Diels collections, Gardner removed duplicate material from some B sheets on his visit there in 1937. This material was subsequently incorporated into PERTH. It is also possible that some Pritzel material in PERTH resulted from an earlier exchange between Diels and Gardner. Diels had written to Gardner in 1923 suggesting an exchange of some Western Australian material for ‘a good Pritzel set’ (Appendix 1). While subsequent correspondence has not been located it seems likely that this exchange went ahead, based on collections in PERTH and B. A good number of Pritzel sheets in PERTH have *Plantae Australiae occidentalis* labels and came from the Herbarium Gardnerianum (Gardner’s private herbarium, e.g. *Pritzel* 849, Gardnerianum 131; PERTH 01607820). In addition, at least three Gardner types have been located in B that have accession dates consistent with such an exchange (5th September 1925). These three sheets have labels headed ‘Herbarium of C.A. Gardner, Flora of Western Australia’ (B 10 0295158, B 10 0295424, B 10 0279563). Gardner continued to send types to B until at least 1939 (B 10 0272767).

Diels & Pritzel’s joint collections

The joint *Diels & Pritzel* collections also have a particular label, although duplicate material does not. The label is headed in English ‘Flora of Western Australia’. Under the heading is printed ‘No.’ followed by space for collection number and taxon name. On the second line is printed ‘Locality’ then space for the district and a specific location. There is space at the beginning of the third line for the month and year followed by the phrase ‘Collected and presented by Dr. Diels and Pritzel’ (Figure 4).

With the exception of *Astroloma baxteri* DC. no direct reference to joint *Diels & Pritzel* collections is found in the *Fragmenta*. The description of that taxon includes ‘pr. Cape Riche (Moir 1903), Albany et Denmark (D. et Pritzel)’. This appears to refer to an extant collection in PERTH from their joint series (PERTH 02982609 [WAM accession 439] *Diels & Pritzel* 383 Plantagenet Dist.: Albany, March 1901).

These joint collections never left the colony; the donation of two tranches of this material to the WAM is documented in *The West Australian* newspaper (126 plants 18th April 1901; 138 plants 7th August 1901). Further, a WAM register of botanical specimens has been located (PERTH library archive) which allocates accession numbers to Diels’ donations on 15th July 1901 (B1–B138) and a second sequence on 12th September 1921 (B1708–B1759) of previously unincorporated 1901 material. It is assumed that the collections were donated unmounted with one label per collection. Much of the collection information from the *Diels & Pritzel* label was transcribed onto the sheet on which their collections were mounted and had a WAM accession number added in either of two different formats.

The first format has a number corresponding to the ‘B’ numbers recorded in the WAM register on the top left of the sheet and then the taxon name and ‘D – Dr Diels’ on the bottom left, sometimes with locality information (Figure 5). The ‘D’ presumably meant ‘donated by’. Currently in PERTH there are 152 sheets of the 190 ‘B’ numbers recorded in the WAM register. One collection (*Diels & Pritzel* 43, PERTH 03608174) has WAM accession number 1587 and lacks the ‘B’ prefix. Nonetheless this number corresponds to an entry in the WAM register regarding a collection of a Miss Wood. Label

Table 2. Additional labels found on Pritzel’s Australian collections in B.

Label	Example
Herbarium E. Pritzel	http://herbarium.bgbm.org/object/B100379003
Museum botanicum Berolinense Herbarium E. Pritzel [Hand written subheading]	http://herbarium.bgbm.org/object/B100379004
Museum botanicum Berolinense [Ex] Museo botanico Berolinensi [Ex crossed out on some labels]	http://herbarium.bgbm.org/object/B100365994 http://herbarium.bgbm.org/object/B100278848

information from two different collections appears to have been transcribed onto this sheet but it clearly represents a *Diels & Pritzel* collection.

The second format is an elegant copper plate script with a WAM accession number, the taxon name, ‘D – Drs Diels & Pritzel’ and the location written across the bottom of the sheet (Figure 6). These accession numbers are not prefixed by the letter ‘B’ and do not appear to be recorded in the WAM register. There are 286 sheets in this set, their numbering appears sequential (7–753) with most missing blocks generally being runs of less than five numbers. It seems likely that allocation of accession numbers would have been systematic, implying that a good deal of the original donation (perhaps 450 sheets) may have been lost. Why there are these two different formats and why only one appears in the WAM register remains unclear.

Both of these formats generally come with two further labels: a label recording the transfer from the WAM to the State Herbarium and a separate State Herbarium Western Australia (or PERTH label, sometimes both) that duplicates information on the *Diels & Pritzel* labels and the location information on the bottom of the sheet. The State Herbarium Western Australia label often has the WAM accession number written on the lower left of the label.

All presumed duplicate sheets (of the same taxon collected at the same location in the same month) are lacking *Diels & Pritzel* labels, probably indicating that only one label per collection was provided. Other sheets either lack the WAM annotations (Figure 4), or the *Diels & Pritzel* labels, or both. This appears to have resulted from curation activities in the 1960s when the collections were lifted off the sheets and the specimens were dipped in mercuric chloride/phenol/alcohol solution. If the original mounting sheet or label, or both, were badly damaged they were discarded and the material remounted and relabelled (A.S. George pers. comm.). It is often possible to infer the original WAM accession number from the annotation on the lower left of the State Herbarium Western Australia label.

The two sheets at C, both species of *Leucopogon* R.Br., appear to be duplicates of *Diels & Pritzel* collections in PERTH (PERTH 02991284, PERTH 02991799) as the C sheets lack *Diels & Pritzel* labels and the date (month/year) and location match the PERTH material. These sheets are stamped with ‘Herb. C.H. Ostenfeld’, who was at one time the keeper of the Botanical Museum in Copenhagen and who collected extensively in Western Australia from August–October 1914. He was acquainted with both B.H. Woodward (Director of the Perth Museum) and W.B. Alexander (Keeper of Biology, Perth Museum) from who this material was probably obtained (Ostenfeld 1916). He later described several *Leucopogon* species from his Australian collections (Ostenfeld 1921).



Figure 3. Pritzel 78, *Grevillea purdieana* Diels, showing both Pritzel's typical label and the slip with additional information often found on B sheets. Source: Röpert (2000–), published at <http://ww2.bgbm.org/herbarium/> [Barcode: B 10 0279537 / Imageld: 294717] [accessed 27 April 2017].



Figure 4. *Diels & Pritzel 39, Grevillea purdieana* Diels, showing their typical joint label. This sheet lacks WAM accession number and hand written script. The original sheet was probably discarded in the 1960s when mercuric chloride treatment was applied (A.S. George pers. comm.). Source: PERTH.



Figure 5. *Diels & Pritzel 507* showing one style of hand written script on the original WAM sheets. Note the 'B' prefix on the accession number (B54, top left). These numbers are consistent with entries in the original WAM register of botanical specimens (B1–B134; B1708–1759), with the *Diels & Pritzel* material being the first entry in the register dated 15th July 1901. Additional WAM transfer, State Herbarium Western Australia and PERTH labels have been added. The newer style of PERTH label in lower right dates from the 1970s (A.S. George pers. comm.). Note also the manuscript name in *Diels*' hand. Source: PERTH.

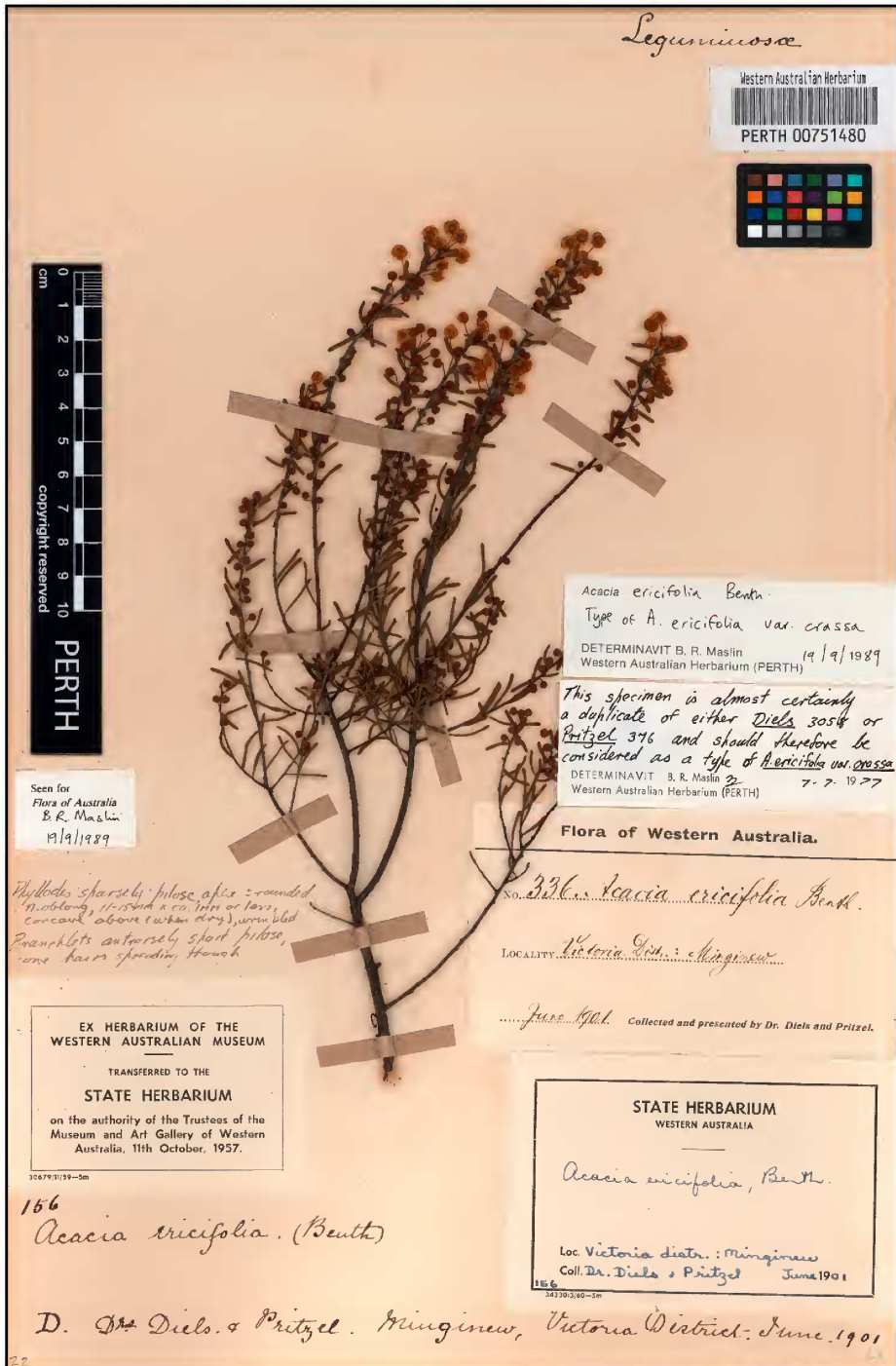


Figure 6. *Diels & Pritzel 336* showing the second style of copper plate script on the original WAM sheets. This style lacks the 'B' prefix to the accession number (1566, above taxon name) and this sequence does not appear in the WAM botanical register. Note the transfer of the WAM accession number to the lower left hand corner of the State Herbarium Western Australia label. Source: PERTH.

Some *Diels & Pritzel* collections do not follow the patterns described above. Five sheets of Lauraceae and five sheets of Orchidaceae do not appear to have been part of the WAM collection as they lack any WAM annotations and labels indicating the transfer, and the PERTH database does not suggest a WAM origin. These families are not otherwise represented in the extant *Diels & Pritzel* collections. The five sheets of *Cassytha* L. have *Diels & Pritzel* labels and numbers and may have either been removed from WAM before accessioning was completed or may have been passed directly to a local colleague by Diels or Pritzel.

Three of the five orchid sheets also have *Diels & Pritzel* labels but no collection numbers. The two remaining sheets have hand written slips (not in Diels' or Pritzel's hand) indicating they were collected by *Diels & Pritzel* (one initialled BTG). These also lack collecting numbers and in addition they have labels headed 'State Herbarium of Western Australia BT Goadby Collection'. Col. B.T. Goadby (1862–1944) was a keen plant collector who made large collections in the Albany area in 1898, 1899 and later (George 2009). He passed a significant number of collections (>500 sheets) to WAM in 1923 and the WAM register recorded further donations of orchids up until June 1932. Some 1,092 sheets collected by Goadby are presently located in PERTH with just under half recorded as coming from the WAM. A further 71 sheets appear to be a specific donation to PERTH from Goadby (date unknown). How he obtained this *Diels & Pritzel* material remains uncertain but could have been directly from Diels and Pritzel, from the WAM before accessioning, or from a third party who had been gifted it at the time of Diels and Pritzel's visit. Given these sheets have no collection numbers it seems unlikely that he obtained them from the WAM.

The three different types of labels used by Diels and Pritzel have been described in detail as there has been considerable confusion correctly identifying their collection numbers (especially of the *Diels & Pritzel* material). Much of the confusion appears to be due to the transcription of the WAM accession numbers onto the State Herbarium Western Australia labels and the translation of this information into the PERTH collections database. Currently the collection number captured in the database variously records the correct collection number (top left of *Diels & Pritzel* label), or the WAM accession number, or Diels or Pritzel (or both) individual numbers that were collected at a similar time and place, or are entirely lacking a collection number. This leads to significant confusion in understanding the provenance of these collections. The correct collection numbers and associated PERTH and C sheet numbers and the WAM accession numbers of all but 14 (11 on loan, 3 not located) of the 570 sheets in this joint series are provided in Appendix 2.

Nomenclatural implications

It has been assumed by some authors that the *Diels & Pritzel* collections represent type or probable type material of names published in the *Fragmenta* (Figures 4–6). It is clear from contemporary newspaper reports and the WAM register that the *Diels & Pritzel* material never left the colony and therefore it is unlikely that the protologues found in the *Fragmenta* were based on this material, nor, with one exception, are these collections cited in the *Fragmenta*. Further, it is not clear if these joint collections always unequivocally represent duplicates of individual Diels and Pritzel numbers. Under the Melbourne Code duplicates are defined as 'Part of a single gathering of a single species or infraspecific taxon made by the same collector(s) at the one time' (McNeill *et al.* 2012). Under this definition their joint collections could be considered duplicates of one or other of their individual collections but their individual collections would not generally be considered to be duplicates of each other.

In the case of the taxon described by Diels as *Grevillea purdieana* (Figures 1, 3, 4), the protologue lists three valid syntypes *Diels* 1717, *Diels* 1717a and *Pritzel* 78. Duplicates of *Pritzel* 78 are represented

in at least 13 herbaria (Global Plants 2017, accessed 21 April 2017). Diels records Pritzel's number on his own label. The Pritzel labels give the same general location information while more precise location information appears on a hand written slip attached to the collection at B (Figure 3, Table 3). In addition to the originally published syntypes, McGillivray and Makinson (1993) consider *Diels & Pritzel 39* as a probable part of the type collection and Makinson (2000) considers it as a syntype.

It could be argued that Diels, by listing *Pritzel 78* on his own label, is indicating that his and Pritzel's sheets were collected at the same time and at the same location (Figure 1). However on some other sheets where Diels lists a Pritzel number he has added 'leg. E. Pritzel' and added 'comm.' before his own name (e.g. *Diels 3563*, B 10 0295430). In such cases the Diels collection is unequivocally a duplicate of the Pritzel material. There are no such annotations on *Diels 1717*. In addition, the lack of a specific date on the Pritzel sheet and the difference in location information cannot rule out the possibility of separate collections made in the same general area sometime in late November 1900 when they were on a collecting trip out to Coolgardie (Diels 2007).

The location information on Pritzel's label is very broad, and without the extra information available on the slip attached to *Pritzel 78* at B, their joint collection would not be considered a credible duplicate (Table 3). The lack of precise date and differing locational information also make the consideration of the *Diels & Pritzel* sheet as a possible duplicate for *Diels 1717* problematic.

A stronger case could be made for *Diels & Pritzel 507* representing original material for the name *Halgania argyrophylla* Diels. The type citation for this taxon reads 'Hab. in distr. Irwin pr. Irwin River et Greenough Riv. (F. v. Müller in hb. Melbourn.!), pr. Northampton in arenosis aridis fruticulosis flor. m. Nov. (D. 5642)'. The label of *Diels & Pritzel 507* gives 'Victoria Dist.: Northampton, Novemb. 1901' and it seems likely that their joint collection was collected at the same time and place as *Diels 5642* (Figure 5) and could be considered duplicate material. In addition, Diels' annotation (*Halgania leucophylla* n. sp.; Figure 5) suggests this collection formed part of the basis of the subsequent description, albeit this was not published until some years later. In that case it would also be considered original material (Article 9.3a, McNeill *et al.* 2012).

Table 3. Comparison of temporal and locational data of collections of possible syntypes of *Grevillea purdieana* Diels.

Collection	Date	Location	Translation
<i>Diels 1717</i>	29 Nov. 1900	Yilgarn: 2 ½km westlich von Southern Cross	Yilgarn: 2 ½km west of Southern Cross
<i>Diels 1717a</i> (presumed destroyed)	-	-	-
<i>Pritzel 78</i> (B - slip)	Nov. 1900	Hügel bei Southern Cross (Yilgarn Goldfields)	Hill near Southern Cross (Yilgarn Goldfields)
<i>Pritzel 78</i> (label)	Nov. 1900	Yilgarn and Coolgardie Goldfields	
<i>Diels & Pritzel 39</i>	Nov. 1900	Yilgarn Goldfields, Southern Cross	

A reasonable case can also be made for *Diels & Pritzel* 392 being regarded as syntypes of *Acacia microbotrya* Benth. var. *borealis* E.Pritzel, described in the *Fragmenta*. In this case no specific collection number was cited in the description but it was stated that the specimen was ‘pr. Mingenew a nobis collecta’ [collected by us near Mingenew]. No individual sheets of Diels or Pritzel material of this taxon have been located but two sheets from this location of *Diels & Pritzel* material (*Diels & Pritzel* 392, PERTH 00108081; *Diels & Pritzel* s.n., PERTH 00107603, presumed duplicate of *Diels & Pritzel* 392) can be found in PERTH, annotated as possible syntype and isosyntype, respectively, for this name. From available information and surviving material it appears that this taxon was only collected once, and as such these collections could be regarded as duplicates of that gathering and therefore syntypes for this name.

Seventeen other taxa listed in the *Fragmenta* include the phrase ‘a nobis collecta’. Twelve include individual collection numbers but none of these were joint collections. Only five do not cite a collection number, and none of these bear Diels or Pritzel taxon names and so have no nomenclatural implications.

In cases where there is a lack of congruence in the spatial and temporal data between their joint and individual series, the assumption that their joint collections are necessarily duplicates of one of their individual collections needs to be questioned. If in individual cases it is accepted that the *Diels & Pritzel* collection may not be duplicates of the holotype or syntypes and it is accepted that the original descriptions were not based on this material (since it never left Australia nor was it cited) then under the Melbourne Code (McNeill *et al.* 2012) they cannot be considered original material (Article 9.3), although they do represent excellent material from which to select a neotype if no original material can be located.

Acknowledgements

I would like to thank Paul Wilson, Bruce Maslin, Kelly Shepherd, Juliet Wege and Kevin Thiele for insights into the intricacies of botanical nomenclature, Neville Walsh for assistance with access to MEL archives and Kevin Kenneally for advising me of the Diels correspondence. Alex George provided invaluable advice on historical curatorial procedures and, along with Tony Orchard and Terry Macfarlane, provided constructive criticism of an earlier draft. Thanks also to Kelsie Lamont for assistance with locating and photographing the *Diels & Pritzel* sheets in PERTH, Steve Dillon for photographing some loan material in CANB and Julia Percy-Bower for assistance with the illustrations and database queries.

References

- Diels, L. (1906). *Die Pflanzenwelt von West-Australien südlich des Wendekreises*. (Engelmann: Leipzig.)
- Diels, L. (2007). The plant life of Western Australia: south of the tropic. (Translated B.J. Grieve, B.B. Lamont, E.O. Hellmuth, ed. N. Gibson) *Conservation Science Western Australia* 6(2): 1–373.
- Diels, L. & Pritzel, E. (1904–1905). *Fragmenta Phytographiae Australiae occidentalis*. Beiträge zur Kenntnis der Pflanzen Westaustraliens, ihrer Verbreitung und ihrer Lebensverhältnisse. *Botanische Jahrbücher für Systematik, Pflanzengeschichte und Pflanzengeographie* 35: 55–662.
- Ewart, A. (1907). Royal Botanic Gardens Melbourne Archive – Manuscript 399a folio 22 to J.H. Maiden 16 May 1907.
- George, A.S. (2009). *Australian botanist's companion*. (Four Gables Press: Perth.)
- Global Plants (2017). *JSTOR* <https://plants.jstor.org/> [accessed 20 April 2017].
- Hennings, P. (1901a). Fungi Australiae occidentalis I. a cl. Diels et Pritzel collecti. *Hedwigia* 40 *Beib.*: 95–97.
- Hennings, P. (1901b). Fungi Australiae occidentalis II. a cl. Pritzel collecti. *Hedwigia* 40: 352–355.
- Hennings, P. (1903). Fungi australiensis. *Hedwigia* 42 *Beib.*: 73–88.

- Hiepko, P. (1987). The collections of the Botanical Museum Berlin-Dahlem (B) and their history. *Englera* 7: 219–252.
- Makinson, R.O. (2000). *Grevillea*. In: Wilson, A. (ed.) *Flora of Australia* 17A: 1–460. (Australian Biological Resources Study: Canberra.)
- McGillivray, D.J. & Makinson, R.O. (1993). *Grevillea, Proteaceae: a taxonomic revision*. (Melbourne University Press: Melbourne.)
- McNeill, J., Barrie, F.R., Buck, W.R., Demoulin, V., Greuter, W., Hawksworth, D.L., Herendeen, P.S., Knapp, S., Marhold, K., Prado, J. & Prud'homme Van Reine, W.F. (2012). International Code of Nomenclature for algae, fungi, and plants. *Regnum vegetabile* 154.
- Ostenfeld, C.E.H. (1916). Contributions to West Australian botany. I. *Dansk Botanisk Arkiv* 2(6): 1–44.
- Ostenfeld, C.E.H. (1921). Contributions to West Australian Botany, part III: Additions and notes to the flora of extra-tropical W. Australia. *Biologiske meddelelser, Kongelige Danske Videnskabernes Selskab* 3: 1–144
- Röpert D. (ed.) (2000–). *Digital specimen images at the Herbarium Berlinense*. <http://search.biocase.org/bgbm/> [accessed 3 April 2017].
- State Records Office of Western Australia (1900). Dr Ludwig Diels. Visit to Western Australia to study flora of the colony, asking for railway passes etc. AU WA S36 – cons1496 1900/1598.

Appendix 1. Transcript of a letter from Diels to Gardner suggesting an exchange of plant material (PERTH library archive).

Der Direktor
des Botanischen Gartens und Museums

Berlin – Dahlem, den 3^{ten} September 1923
Königin Luisenstrasse 6–8.

C.A. Gardner, Esq., Forest Department, Perth, W.A.

Dear Sir,

From the last issue of the P. & P. of the Roy. Soc. of W.A. I see that you are doing a good deal of work in the native flora of W.A. Being still much interested in the progress of W.A. botany, I venture to ask you whether you would care to start an exchange of W.A. herbarium specimens with me. I have got to offer a fairly good set of Pritzel's W.A. plants, if you would like to have this, please let me know. I would like to receive in return specimens of the regions not yet botanically exhausted, f.i. specimens (even small ones) of the species described by you. I shall be able, also, to compare doubtful forms with the good set of Drummonds plants of our herbarium.

I am, Dear Sir,
Yours truly,
Dr. L. Diels

Appendix 2. *Diels & Pritzel* joint collections held in C and PERTH indicating currently accepted taxon name, sheet number, corrected *Diels & Pritzel* collection number, date and WAM accession number. For some sheets the WAM accession number was inferred from an annotation on the lower left corner of the State Herbarium Western Australia label in cases where the original sheet had been discarded. Sheet numbers are from PERTH, except for the two C sheets which are prefixed with C.

Sheet No.	Taxon	Date	Collection No.	WAM Acc. No.
00111929	<i>Acacia aestivalis</i>	/01/1901	208	none
00720445	<i>Acacia alata</i> var. <i>alata</i>	/05/1901	306	150
00453609	<i>Acacia ancistrocarpa</i>	/04/1901	342	290
00115517	<i>Acacia barbinervis</i> subsp. <i>barbinervis</i>	/12/1900	252	154
00115096	<i>Acacia barbinervis</i> subsp. <i>barbinervis</i>	/12/1900	143	none
00115991	<i>Acacia baxteri</i>	/01/1901	178	170
00646768	<i>Acacia biflora</i>	/01/1901	226	160
00133418	<i>Acacia chrysocephala</i> (typical variant)	/05/1901	307	174
00670383	<i>Acacia cyclops</i>	/12/1900	224	none
00108081	<i>Acacia daphnifolia</i>	/06/1901	392	162
00107603	<i>Acacia daphnifolia</i>	/06/1901	<i>s.n.</i>	128
00683523	<i>Acacia dielsii</i>	/05/1901	290	157
00751480	<i>Acacia ericifolia</i>	/06/1901	336	156
00125202	<i>Acacia hastulata</i>	/07/1901	591	B83
00119067	<i>Acacia huegelii</i>	/12/1900	251	159
00590681	<i>Acacia lasiocalyx</i>	/08/1901	542	B41
00191582	<i>Acacia lasiocarpa</i> var. <i>lasiocarpa</i>	/11/1900	096	none
00100404	<i>Acacia meisneri</i>	/01/1901	239	161
00666319	<i>Acacia merinthophora</i>	/05/1901	288	164
00666300	<i>Acacia merinthophora</i>	/05/1901	<i>s.n.</i>	none
00108057	<i>Acacia microbotrya</i>	/05/1901	276	none
00192295	<i>Acacia myrtifolia</i>	/08/1901	576	B7
00199036	<i>Acacia obovata</i>	/03/1901	412	B1739
00611832	<i>Acacia oncinophylla</i> subsp. <i>oncinophylla</i>	/08/1901	600	B121
00607568	<i>Acacia oncinophylla</i> subsp. <i>oncinophylla</i>	/09/1901	476	B1740
00313505	<i>Acacia preissiana</i>	/12/1900	250	168
00708194	<i>Acacia ridleyana</i>	/03/1901	360	none
00707783	<i>Acacia ridleyana</i>	/03/1901	<i>s.n.</i>	155
00643599	<i>Acacia stenoptera</i>	/12/1900	009	152
00114065	<i>Acacia teretifolia</i>	/05/1901	310	153
01827901	<i>Acacia trachycarpa</i>	/04/1901	350	167
00138649	<i>Acacia truncata</i>	//1901	<i>s.n.</i>	none
00712493	<i>Acacia urophylla</i>	/05/1901	280	163

Sheet No.	Taxon	Date	Collection No.	WAM Acc. No.
00712507	<i>Acacia urophylla</i>	/05/1901	<i>s.n.</i>	none
00725188	<i>Acacia willdenowiana</i>	/06/1901	<i>s.n.</i>	none
00717894	<i>Acacia willdenowiana</i>	/06/1901	<i>s.n.</i>	none
01986643	<i>Acanthocarpus preissii</i>	/04/1901	358	728
03501779	<i>Actinotus omnifertilis</i>	/03/1901	381	324
03501965	<i>Actinotus omnifertilis</i>	/03/1901	<i>s.n.</i>	none
01714929	<i>Adenanthos barbiger</i>	/12/1900	<i>s.n.</i>	none
01720678	<i>Adenanthos meisneri</i>	/11/1900	070	583
01710222	<i>Adenanthos sericeus</i> subsp. <i>sericeus</i>	/01/1900	<i>s.n.</i>	582
03821498	<i>Adiantum aethiopicum</i>	/01/1901	201	750
02144743	<i>Allocasuarina acutivalvis</i>	/11/1900	037	654
01134914	<i>Allocasuarina grevilleoides</i>	/08/1901	527	B52
02215195	<i>Allocasuarina humilis</i>	/11/1900	089	655
02224038	<i>Allocasuarina thuyoides</i>	/05/1901	296	652
00310751	<i>Amphipogon debilis</i>	/12/1900	072	none
00311715	<i>Amphipogon laguroides</i> subsp. <i>laguroides</i>	/11/1900	108	741
00311618	<i>Amphipogon laguroides</i> subsp. <i>laguroides</i>	/12/1900	248	740
03195104	<i>Amyema miquelii</i>	/02/1901	371	335
03225925	<i>Amyema preissii</i>	/11/1900	030	336
02060531	<i>Anarthria laevis</i>	/05/1901	314	none
02060825	<i>Anarthria prolifera</i>	/07/1901	585	B89
02124777	<i>Andersonia caerulea</i>	/07/1901	not seen	not seen
02148013	<i>Andersonia heterophylla</i>	/09/1901	532	B1722
02125552	<i>Andersonia lehmanniana</i>	/05/1901	323	463
02129779	<i>Andersonia lehmanniana</i> subsp. <i>pubescens</i>	/05/1901	285	465
02126028	<i>Andersonia micrantha</i>	/01/1901	249	464
02361515	<i>Anthobolus foveolatus</i>	/01/1901	211	672
03662209	<i>Anthocercis genistoides</i>	/07/1901	593	B80
00677337	<i>Aotus cordifolia</i>	/01/1901	354	117
03301486	<i>Aphanopetalum clematideum</i>	/08/1901	543	B40
04387953	<i>Astartea affinis</i>	/11/1900	060	225
06118569	<i>Astartea scoparia</i>	/12/1900	173	none
02951800	<i>Astroloma serratifolium</i>	/05/1901	418	B1723
02952483	<i>Astroloma stomarrhena</i>	/05/1901	301	437
03363163	<i>Babingtonia grandiflora</i>	/09/1901	481	B1754
03378373	<i>Babingtonia urbana</i>	/03/1901	<i>s.n.</i>	221
01804731	<i>Banksia armata</i> var. <i>armata</i>	/05/1901	286	626
01806815	<i>Banksia carlinoides</i>	/03/1901	364	632

Sheet No.	Taxon	Date	Collection No.	WAM Acc. No.
01808729	<i>Banksia fraseri</i> var. <i>ashbyi</i>	/07/1901	430	B127
04385675	<i>Banksia nivea</i> subsp. <i>nivea</i>	/01/1901	183	618
01737732	<i>Banksia occidentalis</i>	/01/1901	262	616
01797913	<i>Banksia sessilis</i> var. <i>cygnorum</i>	/11/1900	073	none
01797603	<i>Banksia sessilis</i> var. <i>sessilis</i>	/05/1901	353	629
01757431	<i>Banksia sphaerocarpa</i> var. <i>sphaerocarpa</i>	/05/1901	284	638
01759175	<i>Banksia telmatiaea</i>	/06/1901	397	621
01759183	<i>Banksia telmatiaea</i>	//1901	411	B1725
01759183	<i>Banksia telmatiaea</i>	/05/1901	411	B1725
01791389	<i>Banksia tenuis</i> var. <i>tenuis</i>	/07/1901	590	B84
02346524	<i>Beaufortia aestiva</i>	/11/1901	506	B1752
02283859	<i>Beaufortia anisandra</i>	/01/1901	246	251
02290235	<i>Beaufortia purpurea</i>	/12/1900	193	none
02346206	<i>Beaufortia squarrosa</i>	/01/1901	253	250
03386171	<i>Billardiera fraseri</i>	/01/1901	202	22
02013738	<i>Blancoa canescens</i>	/08/1901	531	B50
00979589	<i>Boronia coerulescens</i> subsp. <i>spinescens</i>	/05/1901	287	65
00934852	<i>Boronia denticulata</i>	/01/1901	loan	loan
00938017	<i>Boronia dichotoma</i>	/12/1900	005	69
00948179	<i>Boronia heterophylla</i>	/09/1901	579	B4
00964018	<i>Boronia molloyae</i>	/09/1901	512	B75
00967750	<i>Boronia ovata</i>	/11/1900	031	66
02982609	<i>Brachyloma baxteri</i>	/03/1901	383	439
02985810	<i>Brachyloma mogin</i>	/05/1901	317	438
00413038	<i>Brachyscome perpusilla</i>	/08/1901	433	B124
01488090	<i>Byblis gigantea</i>	/12/1900	<i>s.n.</i>	184
00307491	<i>Caladenia nana</i> subsp. <i>nana</i>	/09/1901	<i>s.n.</i>	none
01594737	<i>Callistemon glaucus</i>	/01/1901	266	236
03901750	<i>Callitris acuminata</i>	/12/1900	023	675
03902110	<i>Callitris arenaria</i>	/05/1901	413	B27
03904482	<i>Callitris preissii</i>	/06/1901	356	674
01167243	<i>Calothamnus huegelii</i>	/05/1901	279	256
01146319	<i>Calothamnus pachystachyus</i>	/08/1901	553	B30
02330156	<i>Calothamnus quadrifidus</i> subsp. <i>quadrifidus</i>	/11/1900	052	257
02330571	<i>Calothamnus sanguineus</i>	/06/1901	333	none
02398036	<i>Calothamnus sanguineus</i>	/03/1901	373	none
02158760	<i>Calytrix asperula</i>	/01/1901	231	311

Sheet No.	Taxon	Date	Collection No.	WAM Acc. No.
03485900	<i>Calytrix flavescens</i>	/12/1900	163	209
03568598	<i>Calytrix fraseri</i>	/12/1900	154	215
03569683	<i>Calytrix glutinosa</i>	/08/1901	566	B17
01101072	<i>Calytrix pulchella</i>	/10/1901	487	B1755
03521249	<i>Calytrix strigosa</i>	/01/1901	209	213
01078011	<i>Calytrix sylvana</i>	/12/1901	515	B72
03521818	<i>Calytrix tenuiramea</i>	/03/1901	374	211
03521842	<i>Calytrix tenuiramea</i>	/03/1901	<i>s.n.</i>	none
03522687	<i>Calytrix violacea</i>	/10/1901	584	B131
03235130	<i>Capparis spinosa</i> subsp. <i>nummularia</i>	/04/1901	<i>s.n.</i>	none
03235025	<i>Capparis spinosa</i> subsp. <i>nummularia</i>	/04/1901	<i>s.n.</i>	015
03264750	<i>Cassytha flava</i>	/12/1900	228	none
03083233	<i>Cassytha glabella</i>	/12/1900	164	none
03265749	<i>Cassytha melantha</i>	/07/1901	587	none
03266257	<i>Cassytha pomiformis</i>	/12/1900	233	none
03266036	<i>Cassytha racemosa</i>	/11/1900	035	none
02234580	<i>Casuarina obesa</i>	/01/1901	176	656
03503755	<i>Centella asiatica</i>	/12/1900	147	325
03897745	<i>Centrolepis aristata</i>	/11/1900	106	733
03267024	<i>Cephalotus follicularis</i>	/01/1901	227	176
01989790	<i>Chamaexeros serra</i>	/10/1901	486	B120
01230263	<i>Chamelaucium micranthum</i>	/09/1901	not seen	not seen
02178052	<i>Chordifex sphacelatus</i>	/01/1901	181	732
02113384	<i>Choretrum glomeratum</i> var. <i>glomeratum</i>	/06/1901	389	667
00949663	<i>Chorilaena quercifolia</i>	/11/1901	498	B1730
04037219	<i>Comesperma confertum</i>	/11/1900	111	31
04038266	<i>Comesperma flavum</i>	/12/1900	103	none
04039394	<i>Comesperma nudiusculum</i>	/01/1901	264	33
04040627	<i>Comesperma scoparium</i>	/05/1901	loan	loan
04040538	<i>Comesperma scoparium</i>	/05/1901	273	29
04041399	<i>Comesperma virgatum</i>	/12/1900	220	34
02816172	<i>Commersonia borealis</i>	/07/1901	429	B128
01724401	<i>Conospermum flexuosum</i> subsp. <i>flexuosum</i>	/07/1901	462	B95
01724932	<i>Conospermum glumaceum</i>	/10/1901	568	B15
01728121	<i>Conospermum teretifolium</i>	/01/1901	244	586
02987295	<i>Conostephium pendulum</i>	/05/1901	311	441
02987872	<i>Conostephium preissii</i>	/12/1900	159	442
02049228	<i>Conostylis aculeata</i> subsp. <i>aculeata</i>	/12/1900	017	703

Sheet No.	Taxon	Date	Collection No.	WAM Acc. No.
02010623	<i>Conostylis androstemma</i>	/06/1901	<i>s.n.</i>	none
02011131	<i>Conostylis androstemma</i>	/06/1901	<i>s.n.</i>	695
02050234	<i>Conostylis aurea</i>	/11/1900	090	697
02053314	<i>Conostylis candicans</i> subsp. <i>candicans</i>	/11/1900	087	698
01079808	<i>Conostylis dielsii</i> subsp. <i>dielsii</i>	/08/1901	<i>s.n.</i>	B122
01080199	<i>Conostylis dielsii</i> subsp. <i>dielsii</i>	/08/1901	<i>s.n.</i>	?B52
02056348	<i>Conostylis juncea</i>	/11/1900	<i>s.n.</i>	702
02104911	<i>Conostylis setigera</i> subsp. <i>setigera</i>	/12/1900	207	701
02080850	<i>Conostylis setosa</i>	/11/1900	036	699
01521470	<i>Corchorus parviflorus</i>	/04/1901	344	58
01466852	<i>Corymbia hamersleyana</i>	/04/1901	349	none
01968165	<i>Corynotheca micrantha</i> var. <i>micrantha</i>	/12/1900	104	710
00433314	<i>Cotula coronopifolia</i>	/11/1900	109	354
02580888	<i>Cristonia biloba</i> subsp. <i>biloba</i>	/05/1901	274	none
02580926	<i>Cristonia biloba</i> subsp. <i>biloba</i>	/05/1901	<i>s.n.</i>	122
01501747	<i>Cryptandra arbutiflora</i> var. <i>arbutiflora</i>	/07/1901	460	B97
01512080	<i>Cryptandra mutila</i>	/07/1901	461	B96
01513575	<i>Cryptandra nutans</i>	/06/1901	326	81
01513567	<i>Cryptandra nutans</i>	/06/1901	<i>s.n.</i>	none
01100289	<i>Cryptandra polyclada</i> subsp. <i>polyclada</i>	/05/1901	292	none
01516310	<i>Cryptandra polyclada</i> subsp. <i>polyclada</i>	/05/1901	<i>s.n.</i>	none
01513729	<i>Cryptandra scoparia</i>	/06/1901	282	80
02184583	<i>Cyperus tenellus</i>	/11/1900	044	none
02547899	<i>Dampiera linearis</i>	/11/1900	046	429
02553120	<i>Dampiera stenostachya</i>	/10/1901	511	B76
01310976	<i>Darwinia diosmoides</i>	/01/1901	238	196
01075365	<i>Darwinia leiostyla</i>	/10/1901	577	B6
03922391	<i>Darwinia pauciflora</i>	/08/1901	425	B132
05147662	<i>Daviesia cordata</i>	/11/1900	<i>s.n.</i>	111
05200407	<i>Daviesia croniniana</i>	/11/1901	474	B1738
05147816	<i>Daviesia divaricata</i> subsp. <i>divaricata</i>	/11/1900	045	115
05195705	<i>Daviesia flexuosa</i>	/07/1901	575	B8
05209889	<i>Daviesia hakeoides</i> subsp. <i>subnuda</i>	/05/1901	294	116
05201721	<i>Daviesia hakeoides</i> subsp. <i>subnuda</i>	/05/1901	<i>s.n.</i>	none
05148758	<i>Daviesia nudiflora</i> subsp. <i>hirtella</i>	/06/1901	<i>s.n.</i>	none
05148731	<i>Daviesia nudiflora</i> subsp. <i>hirtella</i>	/06/1901	281	113
05201438	<i>Daviesia preissii</i>	/12/1900	191	114
05189462	<i>Daviesia rhombifolia</i>	/07/1901	444	B113

Sheet No.	Taxon	Date	Collection No.	WAM Acc. No.
02597276	<i>Diaspasis filifolia</i>	/01/1901	257	425
03666425	<i>Dicrastylis fulva</i>	/11/1901	502	B1732
01050605	<i>Dielsia stenostachya</i>	/05/1901	340	735
03920097	<i>Dioscorea hastifolia</i>	/05/1901	s.n.	707
03920100	<i>Dioscorea hastifolia</i>	/05/1901	278	none
00921165	<i>Diplolaena microcephala</i>	/07/1901	446	B112
01082086	<i>Dodonaea ericoides</i>	/03/1901	s.n.	none
01598813	<i>Dodonaea ericoides</i>	/03/1901	382	86
02412497	<i>Dodonaea viscosa</i> subsp. <i>angustissima</i>	/11/1900	032	284
00649104	<i>Drosera heterophylla</i>	/06/1901	s.n.	182
00647527	<i>Drosera heterophylla</i>	/06/1901	398	none
00659029	<i>Drosera huegelii</i>	/07/1901	443	B114
00663727	<i>Drosera macrantha</i> subsp. <i>macrantha</i>	/07/1901	456	B101
00666904	<i>Drosera microphylla</i>	/09/1901	534	B59
00957607	<i>Drummondita ericoides</i>	/06/1901	409	B1731
02338440	<i>Eremaea beaufortii</i> var. <i>lachnosanthe</i> / <i>pauciflora</i> var. <i>lonchophylla</i>	/01/1901	149	259
03920666	<i>Eremaea pauciflora</i> var. <i>pauciflora</i>	/11/1900	067	258
03702626	<i>Eremophila alternifolia</i>	/10/1901	472	B104
02403994	<i>Eremophila glabra</i> subsp. <i>chlorella</i>	/08/1901	526	B57
03793443	<i>Eremophila ionantha</i>	/11/1900	066	521
03852067	<i>Eremophila maculata</i> subsp. <i>brevifolia</i>	/08/1901	563	B20
03855228	<i>Eremophila oldfieldii</i> subsp. <i>oldfieldii</i>	/06/1901	335	529
00506249	<i>Erymophyllum ramosum</i> subsp. <i>ramosum</i>	/11/1900	084	387
02940019	<i>Eryngium pinnatifidum</i>	/11/1900	loan	loan
01328441	<i>Eucalyptus camaldulensis</i> subsp. <i>refulgens</i>	/04/1901	347	276
01324837	<i>Eucalyptus decipiens</i>	/05/1901	300	none
01704877	<i>Eucalyptus decurva</i>	/07/1901	450	B107
01148168	<i>Eucalyptus dissimulata</i> subsp. <i>dissimulata</i>	/01/1901	185	274
01336509	<i>Eucalyptus diversicolor</i>	/03/1901	380	265
01352458	<i>Eucalyptus erythronema</i> subsp. <i>inornata</i>	/05/1901	315	264
01355090	<i>Eucalyptus eudesmioides</i>	/06/1901	327	none
01339354	<i>Eucalyptus forrestiana</i>	/11/1901	479	B1745
01350536	<i>Eucalyptus gomphocephala</i>	/03/1901	377	270
01386352	<i>Eucalyptus horistes</i>	/07/1901	592	B82
01421603	<i>Eucalyptus lehmannii</i> subsp. <i>lehmannii</i>	/05/1901	loan	loan
01410563	<i>Eucalyptus loxophleba</i> subsp. <i>loxophleba</i>	/05/1901	359	262
01391224	<i>Eucalyptus marginata</i> subsp. <i>marginata</i>	/03/1901	372	none

Sheet No.	Taxon	Date	Collection No.	WAM Acc. No.
01391291	<i>Eucalyptus marginata</i> subsp. <i>marginata</i>	/11/1900	019	none
01472968	<i>Eucalyptus nuda</i>	/05/1901	loan	loan
01361821	<i>Eucalyptus occidentalis</i>	/06/1901	388	266
01381784	<i>Eucalyptus oldfieldii</i>	/06/1901	394	none
01463063	<i>Eucalyptus pyriformis</i>	/09/1901	597	B138
01536222	<i>Eucalyptus rudis</i>	/02/1901	369	313
01473638	<i>Eucalyptus rudis</i>	/02/1901	<i>s.n.</i>	none
01471015	<i>Eucalyptus salmonophloia</i>	/06/1901	519	B1742
01457918	<i>Eucalyptus salmonophloia</i>	/05/1901	293	261
01409166	<i>Eucalyptus subangusta</i> subsp. <i>subangusta</i>	/03/1901	378	263
01460307	<i>Eucalyptus torquata</i>	/11/1901	515	none
01181599	<i>Eucalyptus victrix</i>	/04/1901	345	none
01473824	<i>Eucalyptus wandoo</i> subsp. <i>wandoo</i>	/08/1901	408	B1743
01473395	<i>Eucalyptus wandoo</i> subsp. <i>wandoo</i>	/02/1901	370	320
00699071	<i>Euchilopsis linearis</i>	/12/1900	156	109
02364883	<i>Exocarpos odoratus</i>	/03/1901	<i>s.n.</i>	671
02364808	<i>Exocarpos odoratus</i>	/03/1901	<i>s.n.</i>	none
02366649	<i>Exocarpos sparteus</i>	/02/1901	363	673
02366738	<i>Exocarpos sparteus</i>	/02/1901	<i>s.n.</i>	none
04157184	<i>Ficus brachypoda</i>	/04/1901	387	651
08418217	<i>Frankenia glomerata</i>	/11/1901	404	B1728
01675877	<i>Franklandia fucifolia</i>	/01/1901	186	589
02741725	<i>Gastrolobium celsianum</i>	/08/1901	558	B25
02820102	<i>Gastrolobium dilatatum</i>	/12/1900	166	90
02906317	<i>Gastrolobium ebracteolatum</i>	/12/1900	012	91
02891867	<i>Gastrolobium obovatum</i>	/08/1901	565	B19
02783460	<i>Gastrolobium velutinum</i>	/10/1901	484	B1735
02784068	<i>Gastrolobium villosum</i>	/07/1901	595	none
03470482	<i>Glischrocaryon aureum</i>	/11/1900	076	185
00417483	<i>Gnephosis tenuissima</i>	/11/1900	064	357
02831767	<i>Gompholobium polymorphum</i>	/11/1900	<i>s.n.</i>	none
03492095	<i>Gonocarpus benthamii</i> subsp. <i>benthamii</i>	/01/1901	200	190
01109537	<i>Gonocarpus cordiger</i>	/12/1900	235	107
01067060	<i>Gonocarpus</i> sp.	/12/1900	162	188
02601249	<i>Goodenia coerulea</i>	/12/1900	001	481
02603578	<i>Goodenia eatoniana</i>	/01/1901	199	416
02604388	<i>Goodenia fasciculata</i>	/11/1900	051	422

Sheet No.	Taxon	Date	Collection No.	WAM Acc. No.
02604566	<i>Goodenia pulchella</i> subsp. Coastal Plain A (M. Hislop 634)	/12/1900	002	415
01761765	<i>Grevillea argyrophylla</i>	/08/1901	549	none
01762850	<i>Grevillea biformis</i> subsp. <i>biformis</i>	/01/1901	142	none
01763563	<i>Grevillea bipinnatifida</i> subsp. <i>bipinnatifida</i>	/12/1900	<i>s.n.</i>	none
01850741	<i>Grevillea biternata</i>	/06/1901	loan	loan
01111108	<i>Grevillea candolleana</i>	/08/1901	571	none
01815512	<i>Grevillea diversifolia</i> subsp. <i>diversifolia</i>	/02/1901	366	600
01801600	<i>Grevillea excelsior</i>	/10/1901	414	none
02219042	<i>Grevillea fasciculata</i>	/05/1901	316	605
02219875	<i>Grevillea hakeoides</i> subsp. <i>stenophylla</i>	/06/1901	328	598
02072726	<i>Grevillea integrifolia</i>	/05/1901	299	614
01803603	<i>Grevillea manglesii</i> subsp. <i>manglesii</i>	/11/1900	049	none
01961616	<i>Grevillea nematophylla</i>	/11/1900	039	none
01849646	<i>Grevillea occidentalis</i>	/01/1901	221	597
02415364	<i>Grevillea pilulifera</i>	/05/1901	351	none
01068687	<i>Grevillea pimeleoides</i>	/08/1901	432	B125
01938843	<i>Grevillea preissii</i> subsp. <i>preissii</i>	/06/1901	275	none
02439093	<i>Grevillea synapheae</i> subsp. <i>synapheae</i>	/08/1901	596	none
01937766	<i>Grevillea trifida</i>	/01/1901	440	B117
02414694	<i>Grevillea umbellulata</i>	/08/1901	426	B133
02407876	<i>Grevillea vestita</i> subsp. <i>vestita</i>	/08/1901	loan	loan
02696738	<i>Guichenotia micrantha</i>	/08/1901	541	B42
03293416	<i>Gyrostemon ramulosus</i>	/08/1901	561	B22
06185894	<i>Hakea circumalata</i>	/09/1901	422	none
06161111	<i>Hakea costata</i>	/03/1901	365	631
06125107	<i>Hakea cristata</i>	/05/1901	<i>s.n.</i>	628
06123449	<i>Hakea erinacea</i>	/05/1901	309	627
06160565	<i>Hakea ferruginea</i>	/07/1901	589	B85
06157041	<i>Hakea ferruginea</i>	/01/1901	240	none
06160026	<i>Hakea incrassata</i>	/07/1901	455	B102
06189024	<i>Hakea lasiantha</i>	/07/1901	588	B86
06158234	<i>Hakea linearis</i>	/01/1901	268	613
06122809	<i>Hakea marginata</i>	/06/1901	<i>s.n.</i>	none
06123074	<i>Hakea marginata</i>	/06/1901	390	612
06308139	<i>Hakea myrtooides</i>	/08/1901	598	B135
06291406	<i>Hakea pycnoneura</i>	/06/1901	337	630
02630303	<i>Halgania anagaloides</i>	/01/1901	272	506

Sheet No.	Taxon	Date	Collection No.	WAM Acc. No.
01602101	<i>Halgania argyrophylla</i>	/11/1901	507	B54
02636603	<i>Halgania cyanea</i> var. Allambi Stn (B.W. Strong 676)	/10/1901	415	B66
02634082	<i>Halgania sericiflora</i>	/11/1901	405	B51
02879476	<i>Hardenbergia comptoniana</i>	/09/1901	464	B94
02013916	<i>Hemiandra pungens</i>	/11/1900	loan	loan
02014718	<i>Hemiandra pungens</i>	/01/1901	loan	loan
03737497	<i>Hemiphora bartlingii</i>	/01/1901	141	531
01968734	<i>Hensmania turbinata</i>	/12/1900	155	725
03043215	<i>Hibbertia aurea</i>	/09/1901	540	B62
03068935	<i>Hibbertia conspicua</i>	/11/1901	503	B63
03028305	<i>Hibbertia cunninghamii</i>	/07/1901	451	none
03093123	<i>Hibbertia diamesogenos</i>	/12/1900	014	none
03038017	<i>Hibbertia nymphaea</i>	/02/1901	367	none
03038092	<i>Hibbertia nymphaea</i>	/02/1901	<i>s.n.</i>	007
03095096	<i>Hibbertia rupicola</i>	/12/1900	026	307
01278851	<i>Hibbertia silvestris</i>	/01/1901	198	309
03108015	<i>Hibbertia stellaris</i>	/12/1900	059	386
03107736	<i>Hibbertia stellaris</i>	/12/1900	<i>s.n.</i>	305
03538044	<i>Homalosciadium homalocarpum</i>	/12/1900	165	332
02802783	<i>Hovea chorizemifolia</i>	/05/1901	322	123
02803879	<i>Hovea elliptica</i>	/09/1901	494	B1736
02804573	<i>Hovea pungens</i>	/09/1901	493	B1737
02804611	<i>Hovea pungens</i>	/11/1900	094	none
02806215	<i>Hovea trisperma</i>	/05/1901	303	124
03370933	<i>Hybanthus aurantiacus</i>	/04/1901	348	none
03339440	<i>Hybanthus aurantiacus</i>	/04/1901	<i>s.n.</i>	18
03374041	<i>Hybanthus floribundus</i> subsp. <i>floribundus</i>	/06/1901	400	16
03374645	<i>Hybanthus floribundus</i> subsp. <i>floribundus</i>	/06/1901	<i>s.n.</i>	none
02353210	<i>Hypocalymma strictum</i>	/01/1901	263	227
03363686	<i>Isopogon cuneatus</i>	/07/1901	463	B93
03439097	<i>Isopogon divergens</i>	/08/1901	431	B126
03418731	<i>Isopogon drummondii</i>	/02/1901	407	B1724
03364607	<i>Isopogon dubius</i>	/08/1901	569	B14
04229460	<i>Isopogon spathulatus</i>	/05/1901	297	580
03429431	<i>Isopogon teretifolius</i> subsp. <i>teretifolius</i>	/08/1901	528	B55
01884840	<i>Jacksonia alata</i>	/08/1901	467	B90
01910221	<i>Jacksonia floribunda</i>	/12/1900	171	103

Sheet No.	Taxon	Date	Collection No.	WAM Acc. No.
01911686	<i>Jacksonia furcellata</i>	/12/1900	007	104
01914634	<i>Jacksonia spinosa</i>	/01/1901	258	102
01916815	<i>Jacksonia sternbergiana</i>	/12/1900	028	none
01969684	<i>Johnsonia pubescens</i> subsp. <i>pubescens</i>	/11/1900	105	none
02872897	<i>Kennedia microphylla</i>	/09/1901	582	none
00443654	<i>Lagenophora huegelii</i>	/12/1900	175	350
00444006	<i>Lagenophora huegelii</i>	/08/1901	434	none
02703297	<i>Lasiopetalum cordifolium</i> subsp. <i>cordifolium</i>	/09/1901	581	B2
02759128	<i>Lasiopetalum monticola</i>	/09/1901	590	B3
01078720	<i>Lasiopetalum oldfieldii</i> subsp. <i>oldfieldii</i>	/11/1901	403	B43
02008076	<i>Laxmannia sessiliflora</i> subsp. <i>sessiliflora</i>	/06/1901	330	717
06489591	<i>Laxmannia squarrosa</i>	/11/1900	011	722
02202476	<i>Lechenaultia expansa</i>	/12/1900	006	411
02203103	<i>Lechenaultia floribunda</i>	/11/1900	114	412
02441993	<i>Leptomeria cunninghamii</i>	/11/1900	040	664
02442981	<i>Leptomeria lehmannii</i>	/05/1901	320	666
02443341	<i>Leptomeria preissiana</i>	/11/1900	080	663
02444453	<i>Leptomeria scrobiculata</i>	/05/1901	302	665
02445433	<i>Leptomeria squarrolosa</i>	/01/1901	234	668
02401738	<i>Leptospermum erubescens</i>	/08/1901	570	B13
02401924	<i>Leptospermum fastigiatum</i>	/10/1901	471	B1753
03000176	<i>Leucopogon australis</i>	/08/1901	548	B53
02990245	<i>Leucopogon conostephioides</i>	/05/1901	355	458
02955016	<i>Leucopogon dielsianus</i>	/05/1901	405	B1718
02955040	<i>Leucopogon dielsianus</i>	/05/1901	338	none
02955075	<i>Leucopogon dielsianus</i>	/05/1901	<i>s.n.</i>	452
04161718	<i>Leucopogon distans</i>	/07/1901	486	B1720
05700744	<i>Leucopogon glabellus</i>	/01/1901	261	445
07688954	<i>Leucopogon gracillimus</i>	/07/1901	441	B116
02991284	<i>Leucopogon hamulosus</i>	/06/1901	395	456
C10010899	<i>Leucopogon hamulosus</i>	/06/1901	<i>s.n.</i>	none
02991799	<i>Leucopogon hispidus</i>	/06/1901	334	none
C10010901	<i>Leucopogon hispidus</i>	/06/1901	<i>s.n.</i>	460
02992914	<i>Leucopogon nutans</i>	/05/1901	339	none
01140051	<i>Leucopogon oliganthus</i>	/06/1901	402	none
01140078	<i>Leucopogon oliganthus</i>	/06/1901	<i>s.n.</i>	459
03007103	<i>Leucopogon oppositifolius</i>	/05/1901	318	450

Sheet No.	Taxon	Date	Collection No.	WAM Acc. No.
03007898	<i>Leucopogon oxycedrus</i>	/05/1901	319	490
08121303	<i>Leucopogon parviflorus</i>	/04/1901	357	none
03009874	<i>Leucopogon pendulus</i>	/03/1901	386	none
02994488	<i>Leucopogon propinquus</i>	/02/1901	362	453
02997096	<i>Leucopogon pulchellus</i>	/07/1901	549	B81
08153493	<i>Leucopogon</i> sp.	/05/1901	291	none
08153515	<i>Leucopogon</i> sp.	/08/1901	557	B26
02989832	<i>Leucopogon</i> sp. Northern ciliate (R. Davis 3393)	/06/1901	418	B1721
07880405	<i>Leucopogon squarrosus</i> subsp. <i>squarrosus</i>	/05/1901	321	447
04394380	<i>Leucopogon strictus</i>	/07/1901	458	B99
03039331	<i>Leucopogon tamariscinus</i>	/05/1901	298	449
08236364	<i>Leucopogon tenuis</i>	/12/1900	194	457
07579047	<i>Leucopogon tetragonus</i>	/07/1901	482	B1719
01212028	<i>Leucopogon verticillatus</i>	/08/1901	550	B33
02990563	<i>Leucopogon</i> aff. <i>conostephioides</i>	/06/1901	<i>s.n.</i>	489
02768844	<i>Levenhookia preissii</i>	/12/1900	160	409
03831469	<i>Lindsaea linearis</i>	/01/1901	<i>s.n.</i>	749
03831396	<i>Lindsaea linearis</i>	/01/1901	267	none
03575993	<i>Liparophyllum capitatum</i>	/12/1900	015	502
02015900	<i>Lomandra micrantha</i> subsp. <i>micrantha</i>	/06/1901	452	B105
02018632	<i>Lomandra preissii</i>	/05/1901	352	727
01189565	<i>Lotus australis</i>	/08/1901	564	B18
03565351	<i>Malleostemon roseus</i>	/10/1901	517	B70
03267253	<i>Marianthus coeruleopunctatus</i>	/11/1900	025	20
05003105	<i>Marianthus ringens</i>	/09/1901	489	B46
03384128	<i>Marianthus tenuis</i>	/06/1901	454	B103
03834034	<i>Marsilea exarata</i>	/07/1901	447	B110
01162586	<i>Meionectes tenuifolia</i>	/12/1900	206	189
03526801	<i>Melaleuca cardiophylla</i>	/01/1901	213	240
03599523	<i>Melaleuca huegelii</i> subsp. <i>huegelii</i>	/11/1900	047	245
03590593	<i>Melaleuca lateritia</i>	/12/1900	146	314
01578766	<i>Melaleuca leptospermoides</i>	/05/1901	416	B1757
01585649	<i>Melaleuca megacephala</i>	/08/1901	537	B45
03221210	<i>Melaleuca pauciflora</i>	/01/1901	157	249
03606198	<i>Melaleuca preissiana</i>	/12/1900	145	247
03606465	<i>Melaleuca radula</i>	/08/1901	546	B37
03608174	<i>Melaleuca raphiophylla</i>	/11/1900	043	1587

Sheet No.	Taxon	Date	Collection No.	WAM Acc. No.
01577123	<i>Melaleuca seriata</i>	/12/1900	077	none
01577077	<i>Melaleuca seriata</i>	/12/1900	148	241
01606565	<i>Melaleuca spathulata</i>	/10/1901	485	B1756
01570242	<i>Melaleuca striata</i>	/01/1901	150	246
01579908	<i>Melaleuca systema</i>	/11/1900	s.n.	244
03609987	<i>Melaleuca thyoides</i>	/12/1901	514	B71
01576054	<i>Melaleuca trichophylla</i>	/12/1900	190	239
01576011	<i>Melaleuca trichophylla</i>	/11/1900	092	none
00986003	<i>Microcybe multiflora</i> subsp. <i>multiflora</i>	/11/1901	419	B1729
00510548	<i>Millotia myosotidifolia</i>	/09/1901	496	B118
05618169	<i>Monotaxis grandiflora</i> var. <i>grandiflora</i>	/12/1900	022	645
04332024	<i>Muehlenbeckia polybotrya</i>	/06/1901	393	639
03881687	<i>Myoporum montanum</i>	/06/1901	329	519
03881695	<i>Myoporum montanum</i>	/06/1901	s.n.	none
03534243	<i>Myriophyllum tillaeoides</i>	/12/1900	s.n.	178
03065421	<i>Needhamiella pumilio</i>	/09/1901	465	B92
01607839	<i>Newcastelia insignis</i>	/10/1901	480	none
03186490	<i>Olax benthamiana</i> (typical variant)	/08/1901	518	B69
03191060	<i>Olax phyllanthi</i>	/01/1901	229	73
00529133	<i>Olearia paucidentata</i>	/05/1901	s.n.	348
00528927	<i>Olearia paucidentata</i>	/05/1901	324	none
00449628	<i>Olearia</i> sp. <i>Eremicola</i> (Diels & Pritzel s.n. PERTH 00449628)	/05/1901	304	none
03841871	<i>Opercularia echinocephala</i>	/12/1900	167	340
03842940	<i>Opercularia spermacoea</i>	/08/1901	524	B60
03843343	<i>Opercularia vaginata</i>	/12/1900	016	342
03843327	<i>Opercularia vaginata</i>	/01/1901	271	341
01654136	<i>Orianthera campanulata</i>	/12/1900	203	500
01676261	<i>Orianthera spermacoea</i>	/11/1901	478	B95
03575632	<i>Ornduffia albiflora</i>	/11/1900	098	503
00441562	<i>Ozothammus lepidophyllus</i>	/01/1901	179	373
03541940	<i>Pentapeltis peltigera</i>	/12/1900	s.n.	330
01597817	<i>Pentapeltis silvatica</i>	/02/1901	368	none
02974878	<i>Pericalymma crassipes</i>	/02/1901	s.n.	none
02974827	<i>Pericalymma crassipes</i>	/02/1901	391	none
02581280	<i>Pericalymma ellipticum</i> var. <i>floridum</i>	/12/1900	s.n.	233
04173007	<i>Persoonia elliptica</i>	/11/1900	024	590
04094786	<i>Persoonia longifolia</i>	/01/1901	255	592

Sheet No.	Taxon	Date	Collection No.	WAM Acc. No.
04173740	<i>Persoonia saccata</i>	/12/1900	195	591
03440400	<i>Petrophile biloba</i>	/02/1901	245	none
01920847	<i>Petrophile brevifolia</i>	/08/1901	573	B10
03431584	<i>Petrophile chrysantha</i>	/08/1901	567	B16
01866265	<i>Petrophile linearis</i>	/11/1900	054	none
01767860	<i>Petrophile macrostachya</i>	/12/1900	232	579
03431916	<i>Petrophile megalostegia</i>	/09/1901	602	B1726
03440206	<i>Petrophile scabriuscula</i>	/08/1901	427	B130
01858912	<i>Petrophile shuttleworthiana</i>	/08/1901	555	B28
00894680	<i>Philothea nodiflora</i> subsp. <i>lasiocalyx</i>	/10/1901	420	B136
01084038	<i>Phlebocarya filifolia</i>	/11/1900	088	706
01003925	<i>Phyllangium paradoxum</i>	/11/1900	112	501
01627996	<i>Phyllanthus calycinus</i>	/12/1900	loan	loan
00694371	<i>Phyllota barbata</i>	/01/1901	241	118
02504782	<i>Pileanthus peduncularis</i> subsp. <i>peduncularis</i>	/10/1901	417	B67
03406644	<i>Pimelea argentea</i>	/07/1901	586	B88
03409082	<i>Pimelea brevistyla</i> subsp. <i>brevistyla</i>	/09/1901	536	B47
03444007	<i>Pimelea floribunda</i>	/08/1901	551	B32
03445305	<i>Pimelea imbricata</i> var. <i>major</i>	/12/1900	225	660
03446743	<i>Pimelea imbricata</i> var. <i>piligera</i>	/11/1900	<i>s.n.</i>	659
03446751	<i>Pimelea imbricata</i> var. <i>piligera</i>	/11/1900	075	none
03472779	<i>Pimelea rosea</i> subsp. <i>rosea</i>	/11/1900	102	658
03475034	<i>Pimelea suaveolens</i> subsp. <i>suaveolens</i>	/07/1901	445	B111
03476693	<i>Pimelea sylvestris</i>	/11/1900	079	657
00424196	<i>Pithocarpa cordata</i>	/02/1901	376	371
00535591	<i>Pithocarpa pulchella</i> var. <i>melanostigma</i>	/02/1901	269	397
03819329	<i>Plantago exilis</i>	/10/1901	490	B56
00547298	<i>Podolepis capillaris</i>	/11/1900	041	368
00537950	<i>Podolepis gracilis</i>	/11/1900	099	369
00546666	<i>Podolepis nutans</i>	/12/1900	013	370
00539422	<i>Pogonolepis stricta</i>	/11/1900	065	none
00245259	<i>Praecoxanthus aphyllus</i>	31/03/1901	<i>s.n.</i>	none
00244341	<i>Praecoxanthus aphyllus</i>	/03/1901	<i>s.n.</i>	none
00285145	<i>Prasophyllum cucullatum</i>	/10/1901	<i>s.n.</i>	none
00785970	<i>Prasophyllum cyphochilum</i>	04/10/1901	<i>s.n.</i>	none
00216526	<i>Ptilotus declinatus</i>	/11/1900	034	566
00211516	<i>Ptilotus drummondii</i> var. <i>drummondii</i>	/11/1900	053	568

Sheet No.	Taxon	Date	Collection No.	WAM Acc. No.
00216224	<i>Ptilotus gaudichaudii</i> subsp. <i>gaudichaudii</i>	/12/1900	<i>s.n.</i>	563
00220035	<i>Ptilotus manglesii</i>	/11/1900	068	565
00226785	<i>Ptilotus stirlingii</i> subsp. <i>stirlingii</i>	/11/1900	095	567
03741362	<i>Quoya paniculata</i>	/08/1901	438	B119
03770583	<i>Quoya verbascina</i>	/11/1901	501	B1733
01036122	<i>Regelia ciliata</i>	/01/1901	180	312
02127555	<i>Regelia ciliata</i>	/01/1901	254	315
01567128	<i>Rhagodia latifolia</i> subsp. <i>recta</i>	/01/1901	212	542
00436852	<i>Rhodanthe chlorocephala</i> subsp. <i>rosea</i>	/08/1901	428	B129
06845916	<i>Ricinocarpos stylosus</i>	/11/1901	470	B68
03536726	<i>Samolus junceus</i>	/12/1900	008	none
02446405	<i>Santalum acuminatum</i>	/11/1900	010	670
02343061	<i>Scaevola calliptera</i>	/11/1900	078	423
02649837	<i>Scaevola crassifolia</i>	/11/1900	021	419
02737906	<i>Scaevola sericophylla</i>	/01/1901	215	424
03768473	<i>Schizaea fistulosa</i>	/01/1901	259	753
03894924	<i>Scholtzia involucreta</i>	/12/1900	169	218
04064607	<i>Scholtzia umbellifera</i>	/01/1901	210	220
04389603	<i>Selaginella gracillima</i>	/11/1960	113	746
02699435	<i>Seringia hermanniifolia</i>	/01/1901	218	52
00557773	<i>Siloxerus humifusus</i>	/11/1900	093	358
02921383	<i>Sphaerolobium medium</i>	/08/1901	572	B11
03027651	<i>Sphenotoma gracilis</i>	/12/1900	197	none
03027724	<i>Sphenotoma gracilis</i>	/01/1901	230	486
00595314	<i>Spinifex longifolius</i>	/04/1901	346	743
01519131	<i>Spyridium globulosum</i>	/06/1901	283	79
05690102	<i>Stachystemon vermicularis</i>	/05/1901	312	none
01704818	<i>Stirlingia simplex</i>	/09/1901	466	B91
02943301	<i>Stylidium crossocephalum</i>	/09/1901	520	B65
02943646	<i>Stylidium dichotomum</i>	/12/1900	018	495
02943778	<i>Stylidium dichotomum</i>	/12/1900	205	480
03049132	<i>Stylidium miniatum</i>	/08/1901	469	B32
02955768	<i>Stylidium neurophyllum</i>	/11/1900	020	408
03162540	<i>Stylidium nymphaeum</i>	/01/1901	247	407
02959380	<i>Stylidium thesioides</i>	/12/1900	048	404
02694344	<i>Stylidium utricularioides</i>	/11/1900	069	402
03301567	<i>Stylobasium australe</i>	/08/1901	538	B44
03302393	<i>Stylobasium spathulatum</i>	/09/1901	513	B74

Sheet No.	Taxon	Date	Collection No.	WAM Acc. No.
02999331	<i>Styphelia tenuiflora</i>	/05/1901	313	436
04263308	<i>Synaphea</i> sp. Serpentine (G.R. Brand 103)	/12/1900	not seen	not seen
02006693	<i>Synaphea spinulosa</i> subsp. <i>spinulosa</i>	/11/1900	055	none
04035062	<i>Taxandria fragrans</i>	/03/1901	375	230
04035070	<i>Taxandria fragrans</i>	/03/1901	<i>s.n.</i>	none
03885895	<i>Taxandria linearifolia</i>	/11/1900	091	316
02593378	<i>Tecticornia</i> sp.	/12/1900	158	none
03561178	<i>Terminalia circumalata</i>	/04/1901	341	none
03295478	<i>Tersonia cyathiflora</i>	/08/1901	405	B58
02963744	<i>Tetradthea hirsuta</i>	/12/1900	192	299
02963604	<i>Tetradthea hirsuta</i>	/11/1900	081	300
02963183	<i>Tetradthea hirsuta</i>	/08/1901	547	B36
02705486	<i>Thomasia foliosa</i>	/05/1901	<i>s.n.</i>	none
02705478	<i>Thomasia foliosa</i>	/05/1901	325	53
02706032	<i>Thomasia grandiflora</i>	/07/1901	554	B29
02707578	<i>Thomasia pauciflora</i>	/01/1901	214	54
01132210	<i>Thomasia solanacea</i>	/11/1901	499	B39
02709783	<i>Thomasia triphylla</i>	/09/1901	535	B48
04365607	<i>Thryptomene nitida</i>	/06/1901	<i>s.n.</i>	none
02188589	<i>Thryptomene nitida</i>	/06/1901	332	224
02196115	<i>Thryptomene saxicola</i>	/07/1901	499	B108
03015599	<i>Thysanotus dichotomus</i>	/12/1900	236	720
03579867	<i>Trachymene coerulea</i> subsp. <i>coerulea</i>	/12/1900	loan	loan
02861348	<i>Tremandra stelligera</i>	/01/1901	265	none
03110478	<i>Tricoryne elatior</i>	/12/1900	<i>s.n.</i>	719
03894169	<i>Triglochin striata</i>	/02/1901	361	731
01132512	<i>Trymalium angustifolium</i>	/05/1901	295	77
01518437	<i>Trymalium litorale</i>	/07/1901	448	B109
02767554	<i>Verreauxia reinwardtii</i>	/12/1900	174	426
01895729	<i>Verticordia acerosa</i> var. <i>preissii</i>	/10/1901	473	B1750
02063220	<i>Verticordia chrysostachys</i> var. <i>chrysostachys</i>	/11/1901	508	B1751
02061392	<i>Verticordia densiflora</i> var. <i>densiflora</i>	/12/1900	168	199
02061376	<i>Verticordia densiflora</i> var. <i>densiflora</i>	/12/1900	153	none
02062844	<i>Verticordia densiflora</i> var. <i>stelligera</i>	/11/1901	504	B1748
02166593	<i>Verticordia grandis</i>	/01/1901	<i>s.n.</i>	none
02163292	<i>Verticordia habrantha</i>	/09/1901	406	B1746
02208628	<i>Verticordia huegelii</i> var. <i>huegelii</i>	/09/1901	510	B77

Sheet No.	Taxon	Date	Collection No.	WAM Acc. No.
01946714	<i>Verticordia lehmannii</i>	/03/1901	385	202
01057200	<i>Verticordia lindleyi</i> subsp. <i>lindleyi</i>	/12/1900	<i>s.n.</i>	204
02359561	<i>Verticordia nitens</i>	/12/1900	152	206
02359928	<i>Verticordia oculata</i>	/11/1901	500	B1747
01026518	<i>Verticordia plumosa</i> var. <i>ananeotes</i>	/12/1900	243	200
02681943	<i>Verticordia plumosa</i> var. <i>plumosa</i>	/11/1900	074	318
02686627	<i>Verticordia serrata</i> var. <i>ciliata</i>	/10/1901	477	none
01401882	<i>Verticordia wonganensis</i>	/01/1901	237	none
02851385	<i>Viminaria juncea</i>	/11/1900	042	none
00624322	<i>Waitzia suaveolens</i> var. <i>suaveolens</i>	/11/1900	056	378
03731014	<i>Westringia cephalantha</i>	/10/1901	521	B64
02020955	<i>Xanthorrhoea gracilis</i>	/12/1900	063	726
03619109	<i>Xanthosia atkinsoniana</i>	/12/1900	151	329
03619923	<i>Xanthosia ciliata</i>	/12/1900	223	331
01713019	<i>Xylomelum angustifolium</i>	/01/1901	140	593